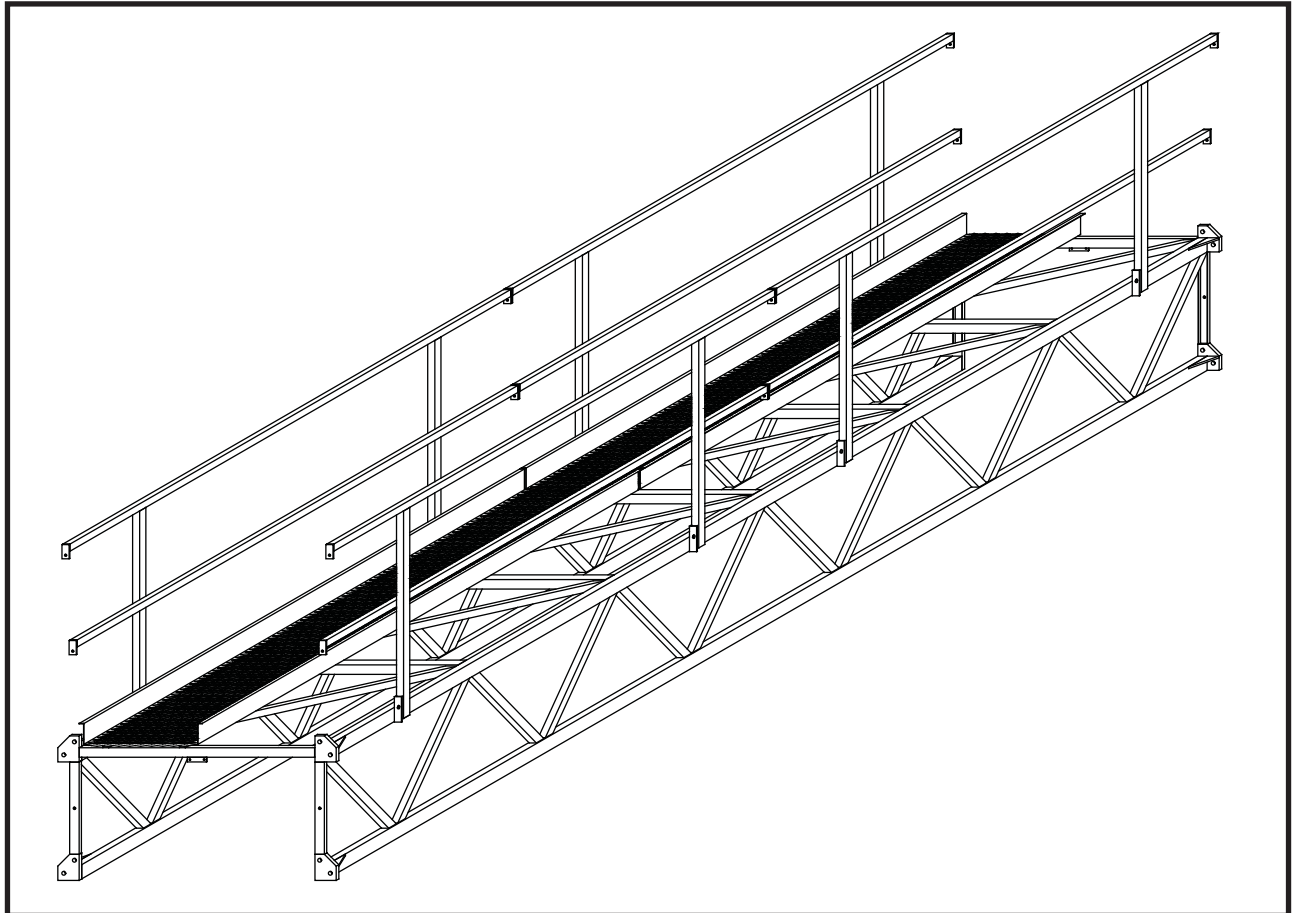




A Unit of **GLOBAL** Industries, Inc.

RS64 CATWALK

Construction, Owner's, and Operator's Manual



Effective Date
2011-10-21



Publication Number
400014 Rev 01
(English Version)

The Symbol shown below is used to call your attention to instructions concerning your personal safety. Watch this symbol - it points out important safety precautions. It means “ATTENTION” - Become Alert! Your Personal Safety Is Involved! Read the message that follows and be alert to the possibility of personal injury or death.



Be Alert! Your Personal Safety Is Involved

A copy of this manual should be available at all times to the owner/operator. Additional copies may be requested from the company at the address shown on the back cover. Please reference manual part number 4000014 when requesting additional copies.

Please Contact MFS/YORK/STORMOR or Your Dealer
If You Have Any Questions Concerning This Manual

Keep This Manual In A Safe Place Available For Future Reference.

The safety and performance of this Catwalk, constructed and readied for operation will be affected by the installation and construction personnel. Catwalks generally involve extreme heights and high winds. Careful consideration must be given to the structural requirements. Brownie Systems cannot be responsible for the construction of the Catwalk. The information obtained in this manual is offered only as a convenience to the installer. No liability is expressed or implied toward the installation.



PREFACE

You have purchased the finest Catwalk manufactured today. The following information is intended as a guide for: Catwalk pre-assembly, proper construction of your Catwalk, and safe and proper use of your Catwalk once constructed.



General Safety Statement

Your safety and the safety of others associated with grain system equipment, is of prime concern to us at Brownie Systems. This manual was written with the safety of the operator and/or others who come into contact with the equipment as our prime concern. We wrote this manual to help you to better understand how to safely build and use your Catwalk.

It is your responsibility as the owner, builder, operator, or supervisor, to know what specific requirements, precautions, and hazards exist and to make these known to all personnel working with the equipment or in the area, so that they too may take any necessary safety precautions that may be required!



Failure to read this Manual and its Safety Instructions by all operators and all personnel is a misuse of the equipment. We want you as our partner in safety!

All personnel, including construction personnel, must read and understand all equipment Operator's Manuals before starting Catwalk construction!



NOTE: Although Global Industries, Inc. language translations of this manual are made as accurately as possible, if there is a conflict or difference between the English and the other translations of this manual, the English text will prevail.

Contents

Be Alert!.....	2
General Safety Statement.....	3
Warranty.....	5
<1> Safety	6
 General Safety Requirements.....	6
 Operating Safety.....	12
<2> Specifications.....	13
<3> Required Pre-Assembly.....	14
Bolt Torque.....	14
Recommended Tools	15
<4> Assembly	16
Parts.....	16
Catwalk Section Assembly	18
Catwalk Installation	21
Catwalk / Conveyor Load Transfers.....	26
Load Transfers Installation, Specific Cases	28
End Enclosure	32
Index	34

Warranty

Global Industries Inc. (the **Company**) makes the following warranty to the initial retail purchaser of its products (the **Customer**).

MATERIALS and WORKMANSHIP:

The Company warrants products manufactured by it to be free from defects in materials and workmanship in normal use and service for a period of one (1) year after date of delivery to the Customer.

COMPANY'S OBLIGATION and CUSTOMER'S EXCLUSIVE REMEDY:

The Company's sole obligation and the Customer's exclusive remedy under this warranty is as follows:

If within one (1) year after delivery to the customer the product fails to function properly due to a defect in either materials or workmanship, the Company will at its option, either repair the defective part or replace the defective part with a new or reconditioned part. Labor charges for removing defective parts and installing replacement parts, shipping charges with respect to such parts, and applicable sales and other taxes, if any, shall not be covered by this warranty.

CONDITIONS, LIMITATIONS, AND EXCLUSIONS:

There are no warranties or merchantability or fitness for a particular purpose with respect to any product manufactured or sold by the Company. Motors provided by the Company are in most instances warranted by the manufacturer thereof and are not warranted by the Company. The Company shall not be responsible under this warranty or otherwise for personal injury or for **Incidental or Consequential Damages**, including, without limitation, loss of use and lost profits. This warranty does not apply to defects or damages caused by misuse, improper maintenance, or improper installation of the Company's product or any equipment attached to or used in connection with the Company's product. The Company reserves the right to make changes or improvements to its products without incurring any obligation with respect to previously manufactured products. Field modification of this product without the expressed written permission of the Company constitutes a misuse of the product. The Company shall have no liability under this warranty until payment in full for the product in question has been made by the customer. The foregoing is the sole warranty made by the Company. No one is authorized to make other warranties on behalf of the Company.

<1> Safety



General Safety Requirements



WARNING!

Watch For This Symbol:  !

It Points Out Important Safety Precautions.

It Means “ATTENTION” - Become Alert!
Your Safety Is Involved.

GENERAL SAFETY

This Brownie Systems Construction and Owners Manual is written to assist and instruct those who are responsible for Catwalk assembly, and for anyone using the Catwalk once assembled.

Global Industries Inc. assumes no liability with respect to proper assembly, installation, and inspection, or use of its products established under applicable laws, all of which is the sole responsibility of the purchaser and those doing the assembly work.

Appurtenances and the accessories manufactured by us for use with our products conform only to applicable Federal or Safety Standards in effect at such time.

WORK AREA SAFETY STATEMENT

Under no circumstances should persons not involved in the operation be allowed to trespass into or be present in the work area.

It shall be the duty of all operators to see that children and/or other persons stay out of the work area! Trespass into the work area by anyone not involved in the actual operations, or trespass into a hazard area by anyone, shall result in an immediate shut down by the operator.

It shall be the responsibility of all operators to see that the work area has secure footing and is clean and free of all debris and tools which might cause accidental tripping and/or falling. It shall also be their responsibility to keep the work area clean and orderly during the operation. It shall also be the responsibility of the operator to have damaged equipment repaired and be made free of sharp edges.

WORK AREA AND EQUIPMENT SAFETY

Do not operate your equipment without shields and guards in place. Failure to heed this warning may result in serious personal injury or death.

Follow all climbing safety laws and regulations. When climbing Catwalks, Stairways, Towers, Ladders, Platforms, and/or Other Grain Systems Equipment. Take care not to fall from this equipment.

Common sense dictates that such appurtenances should not be used when conditions such as rain, wind, or ice preclude their safe use. Global Industries, Inc. strongly recommends that optional climbing equipment be purchased to meet the current specifications set forth by OSHA whether the individual operator is required by law to do so or not. A properly secured safety belt should be used at all times when performing operations work or maintenance on Catwalks, Stairways, Towers, Ladders, Platforms, and/or Grain Systems Equipment.

Care must be taken to avoid entanglement in equipment installed in or on Catwalks, Stairways, Towers, Ladders, Platforms, and/or Grain Systems Equipment. Securely lock-out all power, be it electrical or PTO, prior to working on or near such equipment.

Field modification of the Catwalks, Stairways, Towers, Ladders, Platforms, and/or Other Grain Systems Equipment without the authorization of the manufacturer may present unknown dangers to the operator and must be avoided.

AUXILIARY EQUIPMENT SAFETY

You may decide to buy and install “auxiliary equipment” made by other manufacturers.

Global Industries, Inc. has no control over the design and manufacture of this equipment. If you buy and install auxiliary equipment then at a minimum **we suggest that you do the following:**

- 1** Obtain, read, and understand the instructions and cautions of the auxiliary equipment manufacturer. Be certain all equipment is installed according to the manufacturer’s instructions.
- 2** Check with Global Industries, Inc. or your dealer to make certain that your Catwalks, Stairways, Towers, Ladders, Platforms, and/or Other Grain Systems Equipment is designed to support any additional loads supplied by the auxiliary equipment.
- 3** Obtain any applicable safety decals from the manufacturer of the auxiliary equipment and make certain they are displayed in a visible location.
- 4** Make certain all electrical equipment is properly installed and grounded by a qualified electrician.
- 5** Check availability and operation of electrical lock-out and emergency stop systems.
- 6** Be certain all guards and shields are securely in place.
- 7** Store all operations / maintenance manuals in a safe place available for future use.

PROPER PERSONNEL

To insure safe use of your Catwalk, be certain that only trained persons install, maintain, and use your Catwalk.

OSHA OCCUPATIONAL SAFETY AND HEALTH ACT OF 1970

Certain purchasers of our products may be subject to the requirements and standards of the William-Steiger Occupational Safety and Health Act of 1970, which prescribes standards for use of appurtenances of our manufacture, such as handrails, platforms, stairways, fixed ladders, ladder cages, and guard rails. (Occupational Safety and Health Standards Section 1910.21 through 1910.32). Before installing these devices, familiarize yourself with the above Federal Standards.

At the time of manufacture, these optional items conform to applicable standards.

Global Industries, Inc. assumes no liability with respect to proper construction, assembly, inspection, or use of its products under applicable laws, all of which is the sole responsibility of the purchaser and those doing the assembly work.

OSHA, ANSI, NIOSH

You may obtain further relevant safety information for the safe operation, construction, and use of your Catwalk and grain systems equipment from OSHA, ANSI, and NIOSH:

www.osha.gov

1-800-321-OSHA

www.ansi.org

www.cdc.gov/niosh

1-800-232-4636 (cdc info, NIOSH)

OPERATOR QUALIFICATIONS

Operation of this unit shall be limited to competent and experienced persons. In order to be qualified, they must also know and meet all other requirements, such as, but not limited to, the following:

- 1** Some laws and regulations specify that no one under the age of 16 years may operate power machinery. It is your responsibility to know what these requirements are in your own area or situation.
- 2** Current OSHA regulations state in part: "At the time of initial assignment and at least annually thereafter, the employer shall instruct every employee in the safe operation and servicing of all equipment with which the employee is, or will be involved."*
- 3** Unqualified persons are to **STAY OUT** of the work area.
- 4** A person who has not read and understood all operating and safety instructions is not qualified to operate the machine.

* Federal Occupational Safety and Health Standards for Agriculture, Subpart D. Section 9128.57 (a) (6).

SAFETY QUESTIONS OR CONCERNS

Please contact Brownie Systems with ANY questions or concerns.

In the USA

Phone: 1-800-228-4285

Fax: 1-308-382-6954

**WARNING!**

Owners and Contractors: Before starting construction of your Catwalk,

1) **READ AND UNDERSTAND THIS MANUAL!**

2) Read and understand the instructions for all equipment, auxiliary equipment, structures, or other products, and the like within or connected to this Catwalk / grain system.

4) Read and understand any applicable OSHA Regulations, Building Codes, and Electric Codes.

**WARNING!**

At all times, make certain that all persons within the work area on or near Catwalks, ladders, lifts, crane lifts, scaffolds, or the like are secure and not in danger of falling! Also make certain that the work surfaces are clean and free of clutter.

**WARNING!**

Any alterations to the Catwalk or deviation from instructed assembly and installation procedures, without authorization of Brownie Systems is prohibited.

**WARNING!**

Make certain all persons on Catwalks during construction are properly fastened to safety cables to prevent injury or death due to falling!

**WARNING!**

Do not attempt Catwalk construction when the weather makes it unsafe. Especially, when wind conditions are not favorable!

**WARNING!**

Installation of accessories or equipment in or on your Catwalk or your grain systems equipment/structures that would over-stress these structures in any manner will void your Catwalk and grain systems equipment Warranties. If you do not have specific recommendations from Brownie Systems or the grain systems manufacturer, where additional loading is involved, contact both Brownie Systems and the grain systems manufacturer before installing any such appurtenances or equipment!

**WARNING!**

Local codes supersede the instructions provided in this manual and should be strictly adhered to. Contact the manufacturer if you have questions.

**WARNING!**

Be certain to build your Catwalk in exact accordance with your Catwalk layout.

**WARNING!**

Avoid injury or death! Use extreme caution and use the proper equipment when working from heights. Take the proper precautions to prevent persons or objects from falling!

**WARNING!**

Move components safely. Use only proper lifting equipment with ample load-carrying capacity. Hand lifting is dangerous.

**WARNING!**

DO NOT substitute parts or hardware for those supplied by Brownie Systems.

**WARNING!**

Do not stand on or under Catwalks not yet structurally secure! Not heeding this warning could result in severe injury or death!

**WARNING!**

Read and understand all the instructions in this manual before starting assembly. Build your Catwalk in accordance with the instructions. Failure to build your Catwalk correctly could result in structural damage or failure! Structural damage or failure of any of these assemblies could result in injury or death of persons. Call Brownie Systems using the phone number on the back of the manual if you have any questions regarding assembly.

**WARNING!**

Call the factory right away, to get an answer or to resolve the problem, if any of the following situations occur:

- 1) You encounter any questions or problems with Catwalk construction.
- 2) You have modified (or plan to modify) the catwalk or any equipment supported by the Catwalk in a significant way.
- 3) A modification is made that adds (or may add) wind loading to the Catwalk.

**WARNING!**

Do not use any damaged Catwalk components. It may not be safe.

**WARNING!**

When adding additional equipment not previously accounted for, considerable wind load or weight may be added to the Catwalk. Be certain that you Brownie Catwalk is designed for all equipment, and any future additions. If you are uncertain, contact the factory before installing the Catwalk.

**WARNING!**

Pre-position components before field welding. Verify that all installation requirements are satisfied!

**WARNING!**

If you encounter any problems during catwalk construction, contact Brownie Systems and resolve the problem!

Operating Safety

WARNING!

ALL INFORMATION ON THIS PAGE IS WARNING INFORMATION!

Follow these **4 BASIC SAFETY RULES** for your grain systems equipment to make certain accidents do not occur! Make certain that everyone working with or around your grain systems equipment follows these rules!

- 1 Be certain that all covers, grates, and guards are in place and secure before operating!**
- 2 Never step or walk on conveyor covers, grates, or guards!**
- 3 Lock-out all power before removing covers, grates, or guards! Secure all chains and belts so that they can't move before working on any part of your bucket elevator or conveyor.**
- 4 Don't modify or redesign your Catwalk without first consulting Brownie Systems.**

Following these 4 basic safety rules is a proven way to reduce accidents! Be certain to provide all employees working on or near your Catwalk with effective safety training, including management.

It is ok to add extra safety rules for your job site but **DO NOT SUBSTITUTE** other safety procedures for the 4 safety rules! Following the safety rules given for the safe use of your Catwalk requires a commitment at all levels within your company.

SECONDARY SAFETY DEVICES

Devices such as interlock switches, may be helpful but are not fail-safe and should not be substituted for a proper lock-out procedure. Do not rely on a switch that can fail, lose adjustment, or be bypassed. A proper lock-out procedure will prevent accidents.

REMEMBER! There is no substitute for a commitment to safety!

OTHER IMPORTANT OPERATING CONCERNS

- 1 Do not make contact with or place body parts near moving components and/or moving equipment! Also remember, do not wear loose clothing near moving equipment parts!**
- 2 Have a safety program in place for all personnel. Install any necessary warning signs. Make certain all personnel working in the catwalk area know where all equipment emergency controls and devices are!**
- 3 Work Site Area lighting is part of Work Site Area safety!**
- 4 Completely stop unauthorized climbing access to your Catwalk.**

<2> Specifications

The RS64 Catwalk is available in 3' [914 mm], 6' [1,829 mm], 9' [2,743 mm], and 18' [5,486 mm] lengths. The following instructions provide step-by-step assembly and installation guidelines, based on 18' [5,486 mm] catwalk sections; 3' [914 mm], 6' [1,829 mm], 9' [2,743 mm] sections follow the same general guidelines.



WARNING!

Any alterations to the product or deviation from instructed assembly and installation procedures, without the authorization of Brownie Systems is prohibited.

Catwalk Weight

RS64 CATWALK	WEIGHT
Standard Walkway	50 lbs/ft [74.4 kg/m]

If you have any problems with installation, contact the factory.

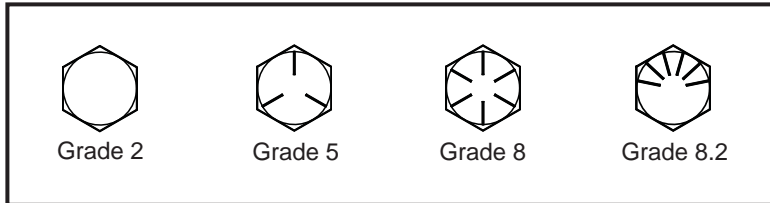
Phone: 1 - 800 - 228 - 4285

Fax: 308 - 382 - 6954

<3> Required Pre-Assembly

Bolt Torque

Bolt Head Identification



Bolt Torque Values

coarse thread bolts

Bolt Diameter - Threads/Inch	Grade 2				Grade 5				Grade 8 and 8.2			
	P	T			P	T			P	T		
		ft-lbs	Nm	kgf-m		ft-lbs	Nm	kgf-m		ft-lbs	Nm	kgf-m
1/4" - 20	1313	6	8.1	0.83	2000	9	12	1.2	2850	13	18	1.8
5/16" - 18	2176	12	16	1.7	3350	19	26	2.6	4700	27	37	3.7
3/8" - 16	3188	22	30	3.0	4950	34	46	4.7	6950	48	65	6.6
7/16" - 14	4388	35	47	4.8	6800	55	75	7.6	9600	77	104	11
1/2" - 13	6850	63	85	8.7	9050	83	110	11	12800	120	163	17
5/8" - 11	9300	110	150	15	14500	170	230	24	20300	230	312	32
3/4" - 10	11400	160	217	22	21300	290	390	40	30100	410	556	57
7/8" - 9	13800	220	298	30	29500	470	640	65	41600	670	910	93
1" - 8	15000	280	380	39	38700	710	960	98	54600	1000	1400	138

Use the torque values listed in the table above for all Catwalk hardware connections!



WARNING!

UNDER NO CIRCUMSTANCES SHALL ANY OTHER BOLT BE SUBSTITUTED FOR THOSE SUPPLIED BY BROWNIE SYSTEMS! The correct bolts as specified and provided by Brownie Systems must be used throughout the entire assembly of this Catwalk. You must achieve the correct bolt torques as indicated in the table above throughout the complete assembly! Using the wrong bolts or not achieving the correct torque values could result in the structural damage or failure of this Catwalk!

Recommended Tools



9/16" wrench



1/2" wrench



7/16" wrench



drift pin

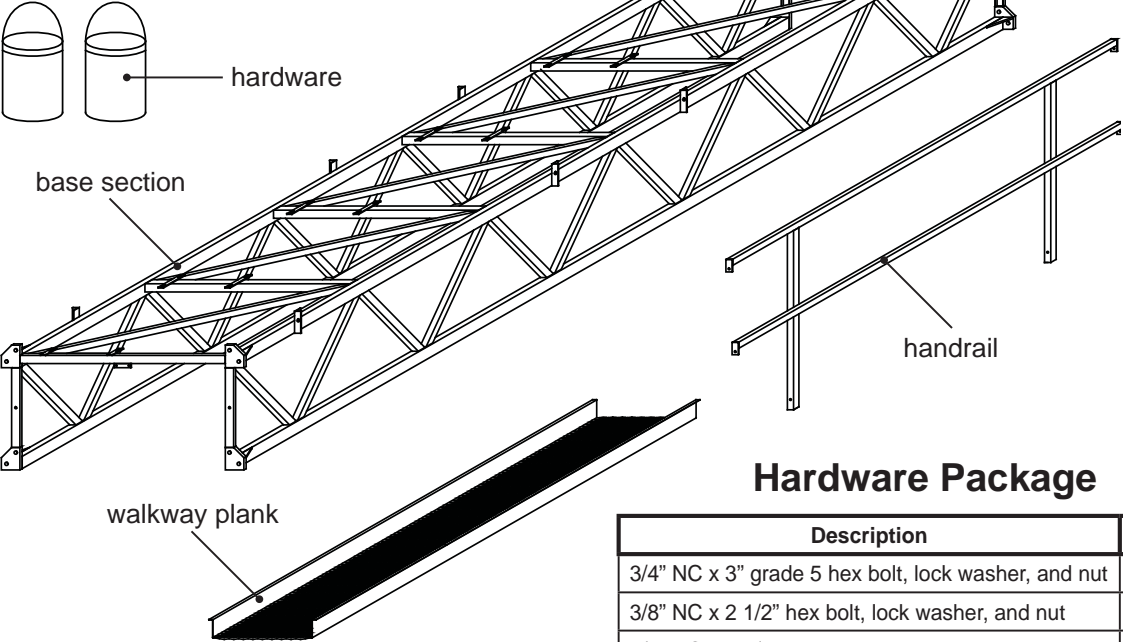


torque wrench

<4> Assembly

Parts

Catwalk Section



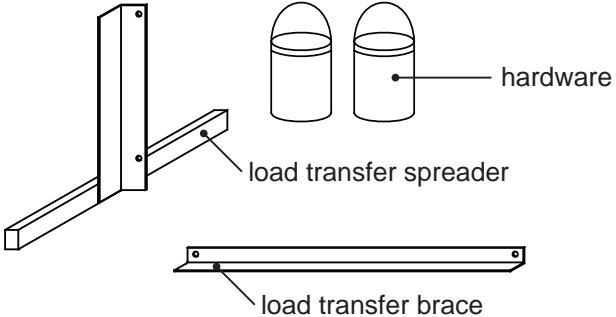
Hardware Package

Description	Quantity
3/4" NC x 3" grade 5 hex bolt, lock washer, and nut	9
3/8" NC x 2 1/2" hex bolt, lock washer, and nut	9
3/8" NC x 1 1/4" hex bolt, lock washer, and nut	9
5/16" NC x 1 1/2" carriage bolt, flat washer, lock washer, and nut	17
1/4" NC x 1 1/4" hex bolt, lock washer and nut	3
diamond anchor	17

Terminating Cross Member



Load Transfers



Hardware Package

Description	Quantity
3/4" NC x 2" grade 5 hex bolt, lock washer, and nut	5

Catwalk Sections

		Catwalk Section Packages			
		18' [5,486 mm]	9' [2,743 mm]	6' [1,829 mm]	3' [914 mm]
overall packages P/Ns →		4299950-1	4299952-1	4299952-1	4299953-1
Part Number	Description				
4300000	18' [5,486 mm] base section	1			
4300001	9' [2,743 mm] base section		1		
G1921130	9' [2,743 mm] walkway plank	2	1		
4300004	9' [2,743 mm] handrail	4	2		
4300002	6' [1,829 mm] base section			1	
G1921131	6' [1,829 mm] walkway plank			1	
4300005	6' [1,829 mm] handrail			2	
4300003	base section				1
G1921132	3' [914 mm] walkway plank				1
4300006	3' [914 mm] handrail				2
4300013	hardware package	1	1	1	1

Terminating Cross Member

(2 required per catwalk run)

Part Number	Description	Quantity
4300007	terminating cross member	1

Load Transfers

(Quantity is dependant on number of support structures.)

Part Number	Description	Quantity
4300009	load transfer spreader	2 / transfer
4300010	load transfer brace	2 / transfer
4300014	hardware package	1 / transfer

Catwalk Section Assembly

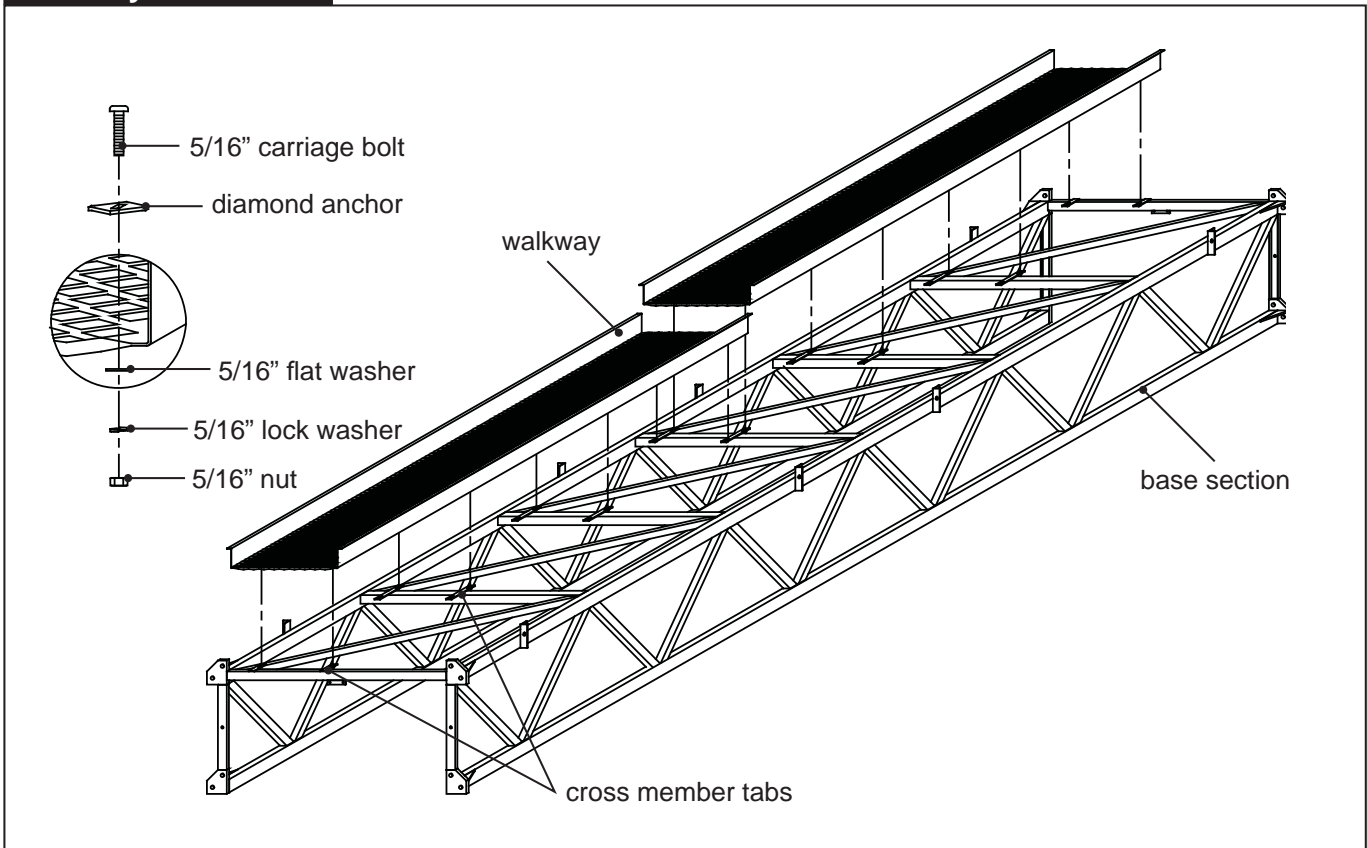
Walkway

1 install walkways

Install (2) 9' [2,743 mm] walkways, using (16) diamond anchors (diamond walk surfaces only), 5/16" x 1 1/2" carriage bolts, flat washers and nuts. See the examples on [the next page](#). Securely fasten all hardware connections.

NOTE: Correctly position the walkway. Install walkway ends first. (See the examples on [the next page](#).) Complete the installation at intermediate locations.

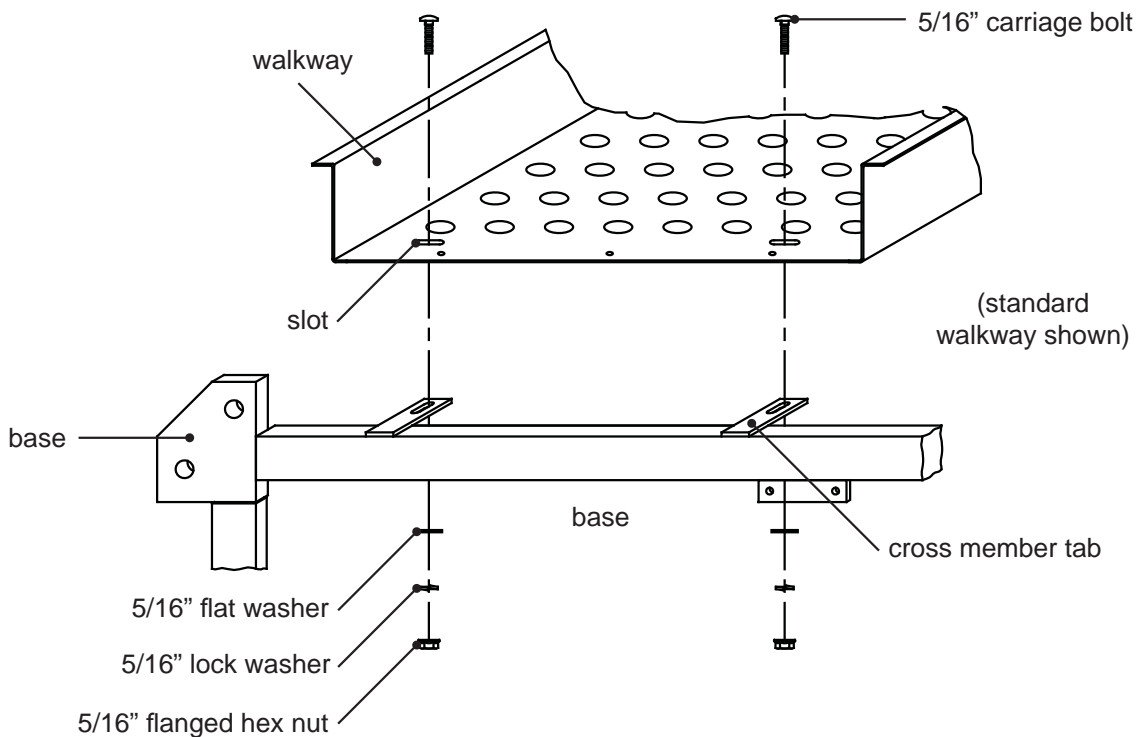
Walkway Installation



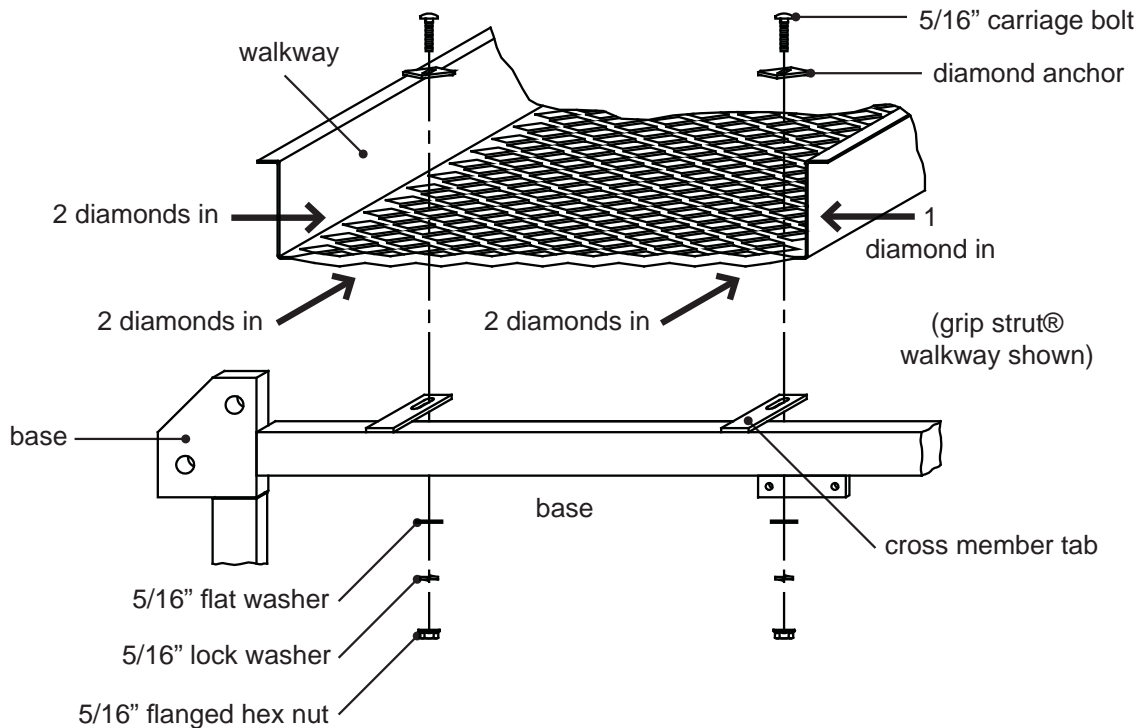
NOTE: If your catwalk does not come with a grip strut walkway, diamond anchors® are not required for assembly.

Install Walkway Ends First

Standard Walkway to Cross Member Tabs Connection



Diamond Walk Surface to Cross Member Tabs Connection

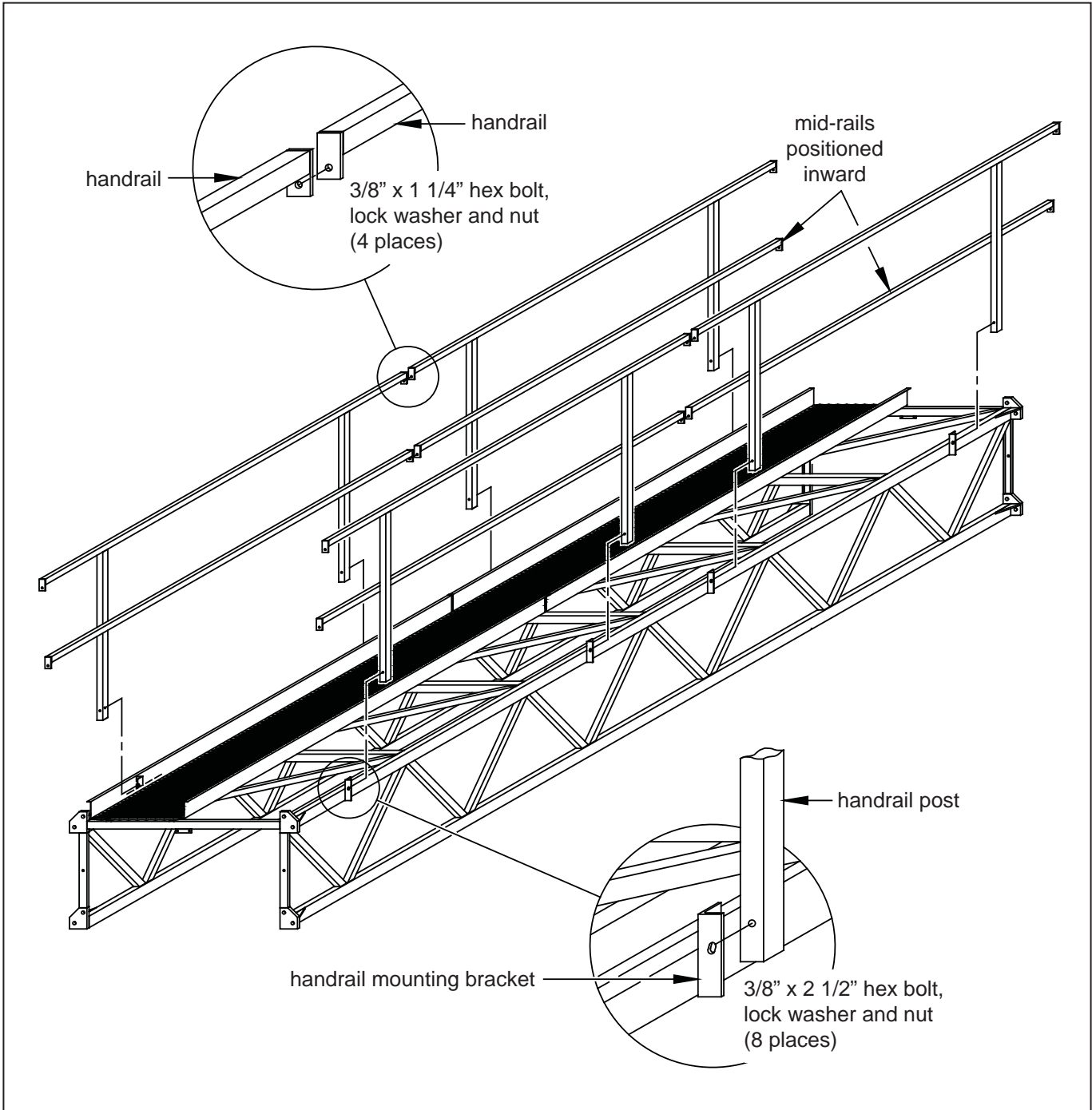


Handrails

2 install handrails

Install (4) 9' [2,743 mm] handrails. Use (8) 3/8" x 2 1/2" hex bolts, lock washers, and nuts at handrail to handrail mounting bracket connections. Use (4) 4/8" x 1 1/4" hex bolts,

lock washers, and nuts at handrail to handrail connections. Position handrails with mid-rails facing inward. Torque all hardware connections according to the torque values given in the table on page 14.



Catwalk Installation

Requirements

The integrity of the RS64 Catwalk is dependent on the following installation requirements:

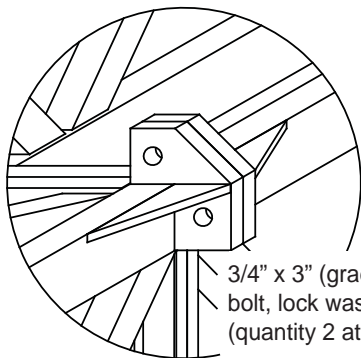
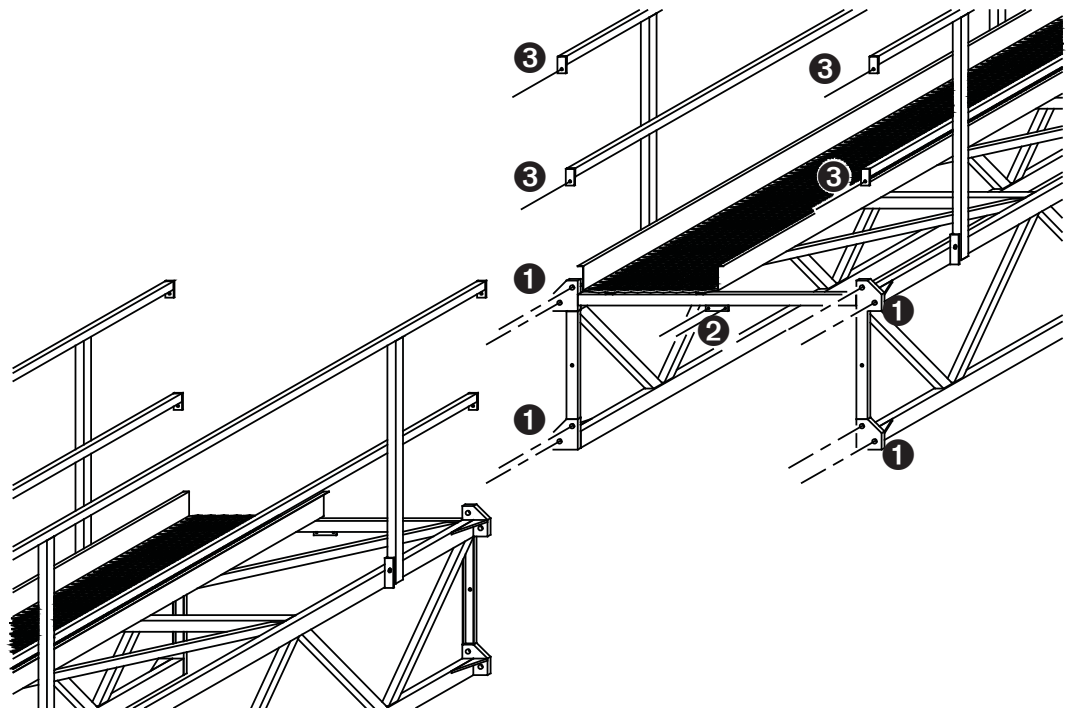
- 1** Terminating cross members are required at each end of a catwalk run. See Terminating Cross Member instructions on [page 23](#) and [pages 32 - 33](#).
- 2** Conveyor loads must be properly transferred into the catwalk. See Conveyor Mounting [pages 24 - 25](#).
- 3** Load transfer assemblies are required at every support structure. See Load Transfer assembly instructions, [pages 26 - 31](#).
- 4** The length of catwalk elevated at one time is dependent on your equipment capabilities; however, crane rigging is required every 25' [7,620 mm] or less. The table on [page 13](#) provides catwalk weights.

Join Sections

3 install handrails

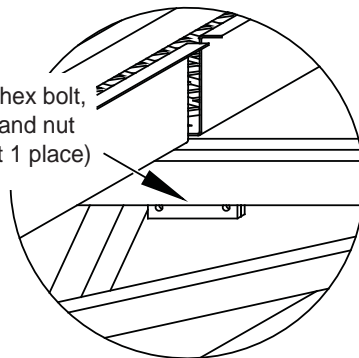
Install (1) section to another section. Use (8) 3/4" x 3" (grade 5) hex bolts, lock washers, and nuts at locations ❶. Use (2) 1/4" x 1 1/4"

hex bolts, lock washers and nuts at location ❷. Use (4) 3/8" x 1 1/4" hex bolts, lock washers and nuts at locations ❸. Torque all hardware connections to the torque values listed in the table on page 14.



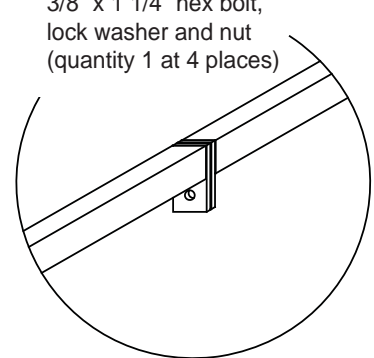
3/4" x 3" (grade 5) hex bolt, lock washer, and nut (quantity 2 at 4 places)

Location ❶



1/4" x 1 1/4" hex bolt, lock washer and nut (quantity 2 at 1 place)

Location ❷



3/8" x 1 1/4" hex bolt, lock washer and nut (quantity 1 at 4 places)

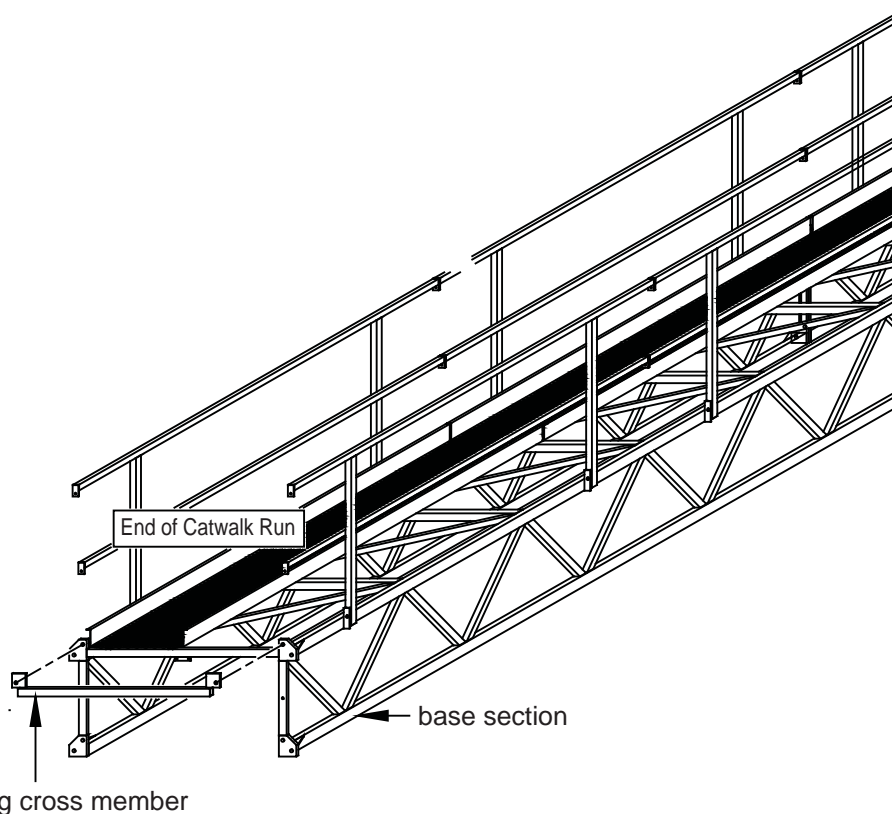
Location ❸

Terminating Cross Member

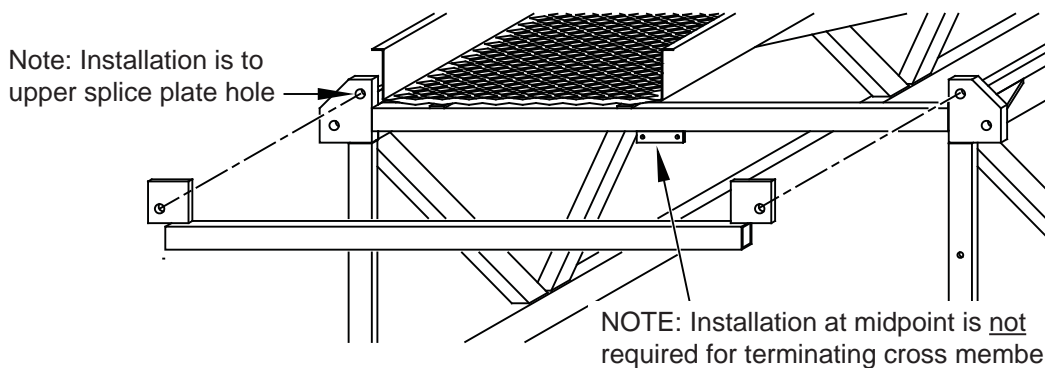
4 install terminating cross members

Terminating cross members are required at each end of a catwalk run. Install the terminating cross member to the base section. Use (2) 3/4" x 3" (grade 5) hex bolts, lock washers, and nuts. Torque all hardware connections to the torque values listed on [page 14](#).

NOTE: If an end enclosure is also required at the end of the run, see *End Enclosure* ([pages 32-33](#)), before installing the terminating cross member; the end enclosure toe board is installed at the same location.



Terminating Cross Member installation detail



Conveyor Mounting

5 conveyor mounting

Conveyor mounting supports are required to properly transfer the conveyor load to the catwalk.

- 1** Determine the conveyor mounting locations. See the next page now.
- 2** Position (2) conveyor supports relative to conveyor mounting locations. Place a 1/4" [7 mm] weld bead to conveyor supports at all contact points.
- 3** Position the conveyor on conveyor-supports; weld or bolt the conveyor to the supports. Do not drill holes in the catwalk members for conveyor attachment!
- 4** Apply touch-up paint on all welded surfaces.

NOTE: Conveyor supports supplied by Brownie Systems upon request only!

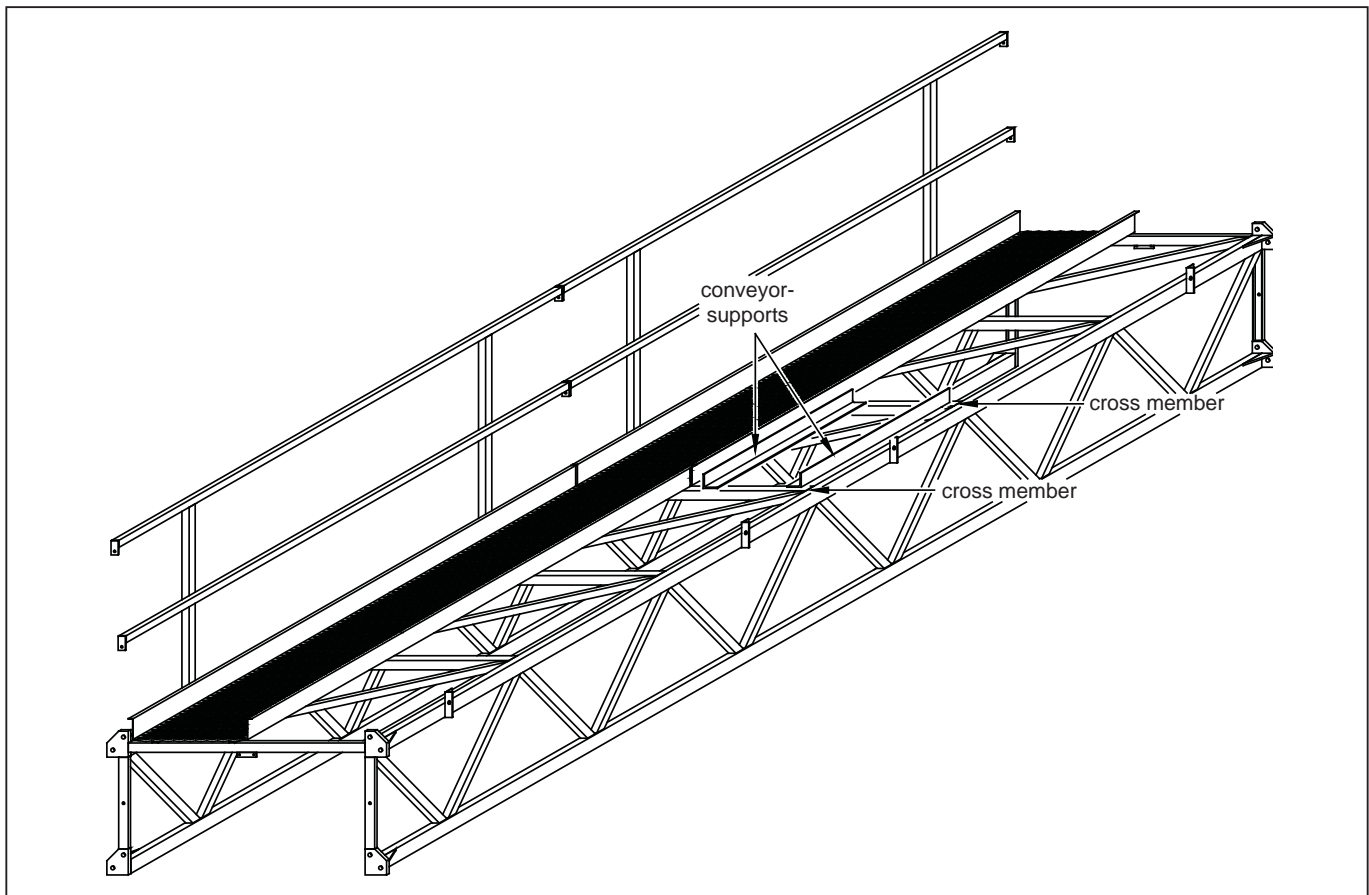
Conveyor Support Requirements:

Must span 2 cross members
(minimum length = 36" [914 mm])

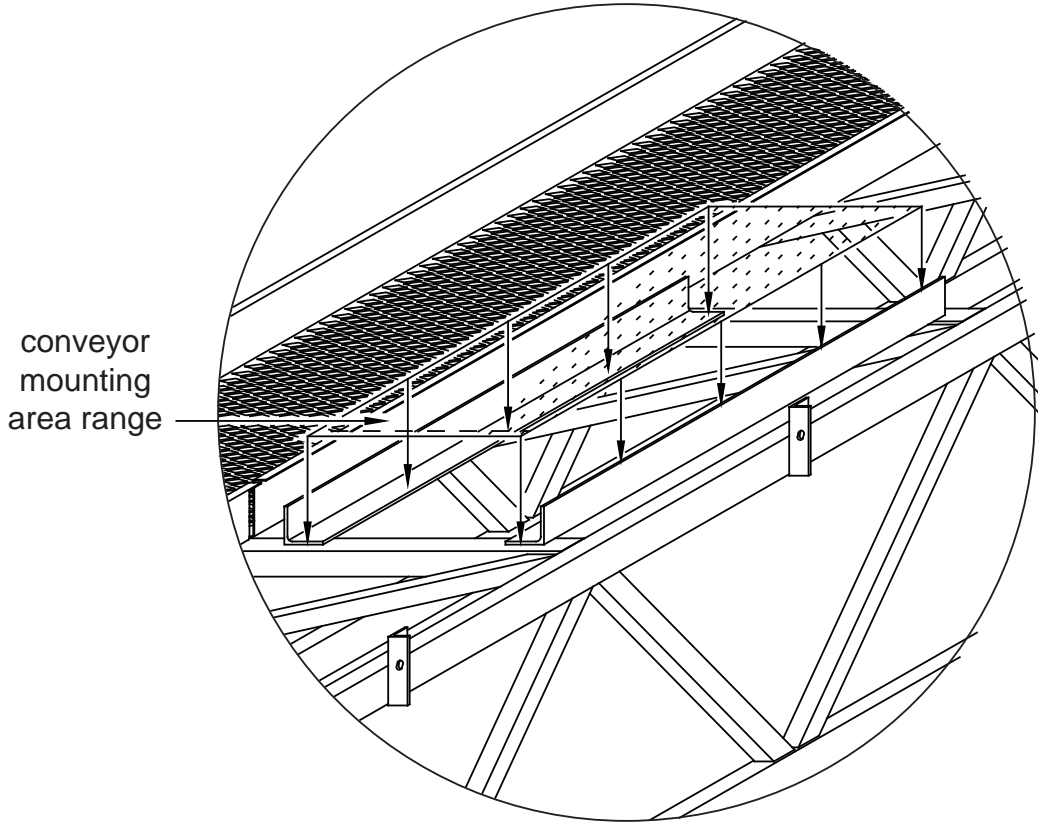
Conveyor Support Recommendations:

3" x 3" x 1/4" [76 mm x 76 mm x 7 mm] angle iron -
0 to 200 lbs/ft [298 kg/m] conveyor load

4" x 4" x 1/4" [102 mm x 102 mm x 7 mm] angle iron -
0 to 200 lbs/ft [298 kg/m] conveyor load and up
to 12,000 lbs [448 kg] motor



NOTE: Conveyor supports span (2) cross members permitting conveyor mounting within the area shown. The distance between conveyor supports is dependent on conveyor width.



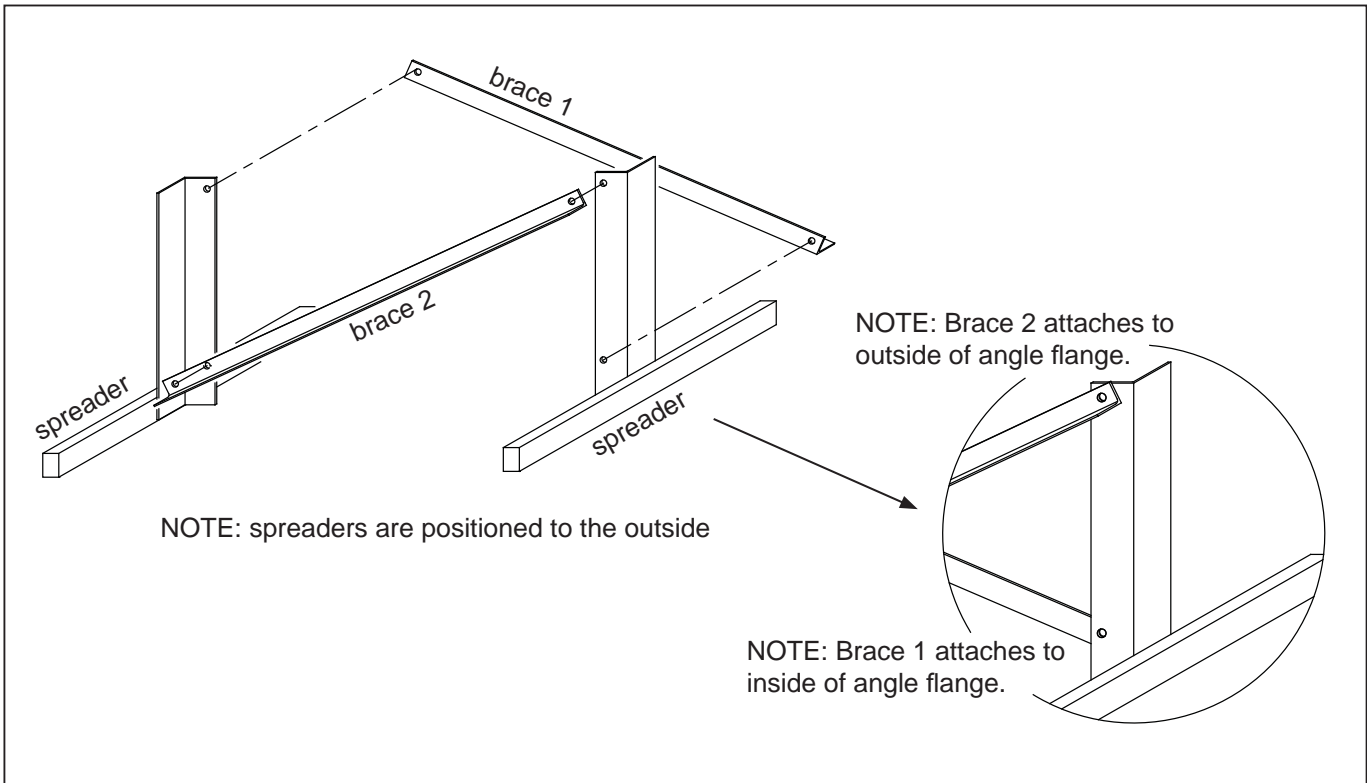
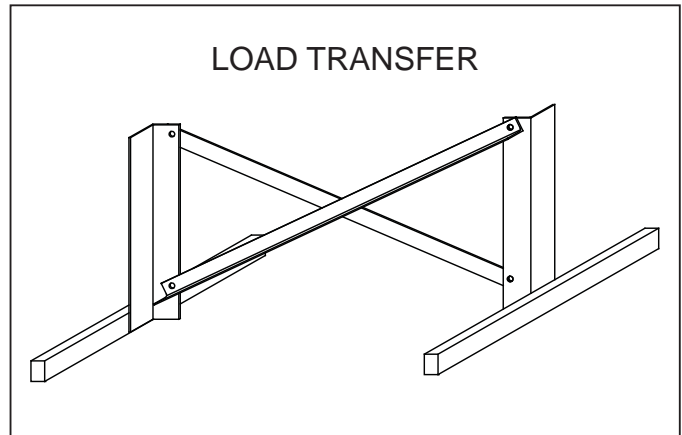
Catwalk / Conveyor Load Transfers

i IMPORTANT NOTE!

Load transfers are required at every support structure. These assemblies transfer catwalk/conveyor loadings into the support structures. It's proper application and installation is critical to effectiveness of the catwalk.

6 assemble load transfers

Assemble each load transfer, using (4) 3/4" x 2" (grade 5) hex bolt, lock washer, and nut.
 NOTE: Do not tighten connections at this time.

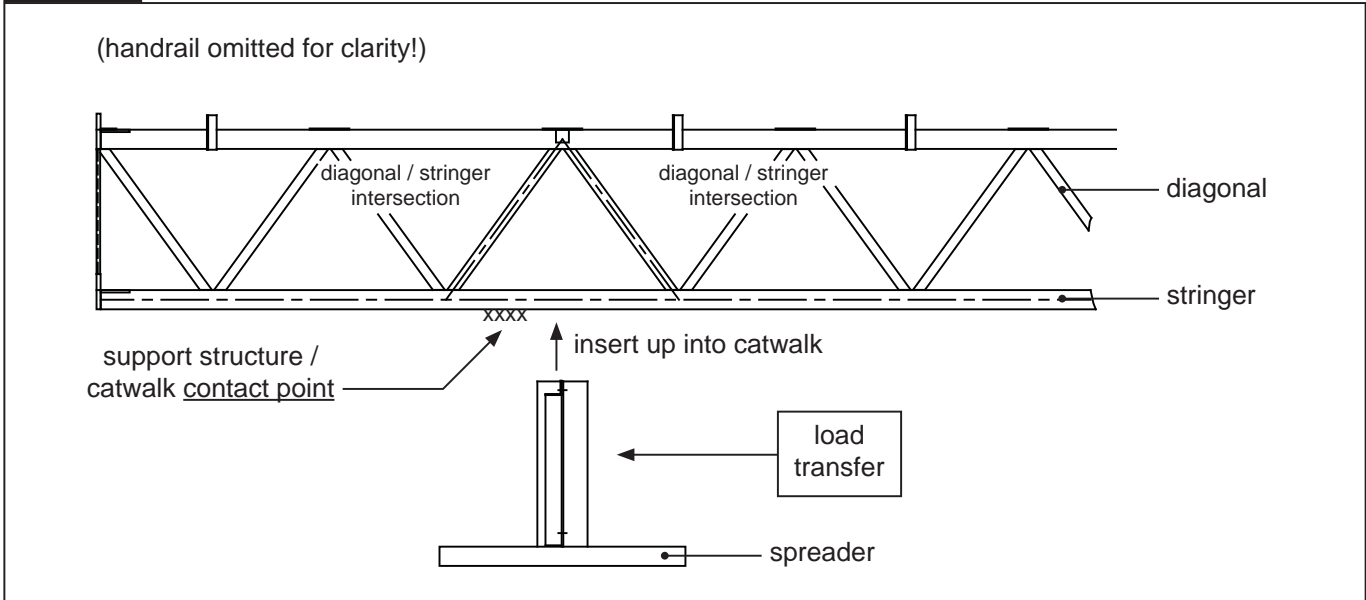


7 install load transfers to catwalk

Determine the location where the support structure will make contact with the catwalk. Install the load transfer at this **contact point**. It is mandatory that the assembly is positioned with each end of the spreaders extending to diagonal/stringer intersections.

NOTE: For ease of installation it is recommended that load transfer assemblies be installed to the catwalk before lifting.

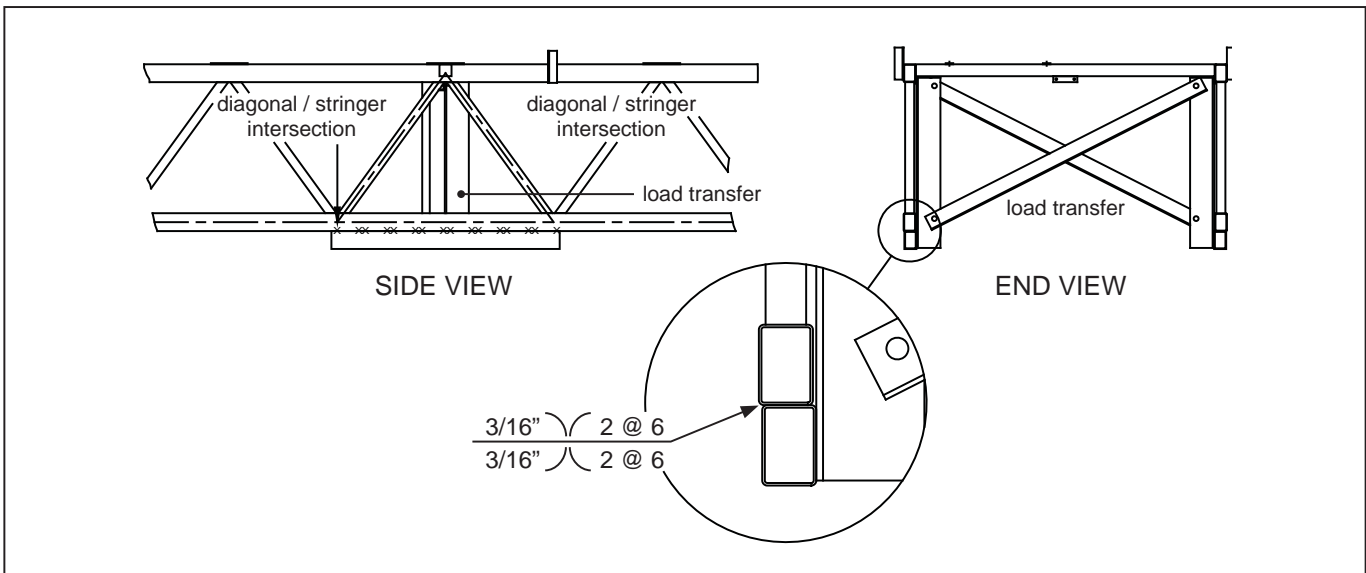
Catwalk



8 install load transfers to catwalk

Torque hardware connections according to the torque values on page 14. Field weld the spreader

to the catwalk stringer. Weld a 3/16" [5 mm] groove, 2" [50 mm] long every 6" [150 mm] (both sides). See pages 21-23 and 28-31 for specific installations.



Load Transfers Installation, Specific Cases

The following cases provide installation information for support structures, provided by Brownie Systems.

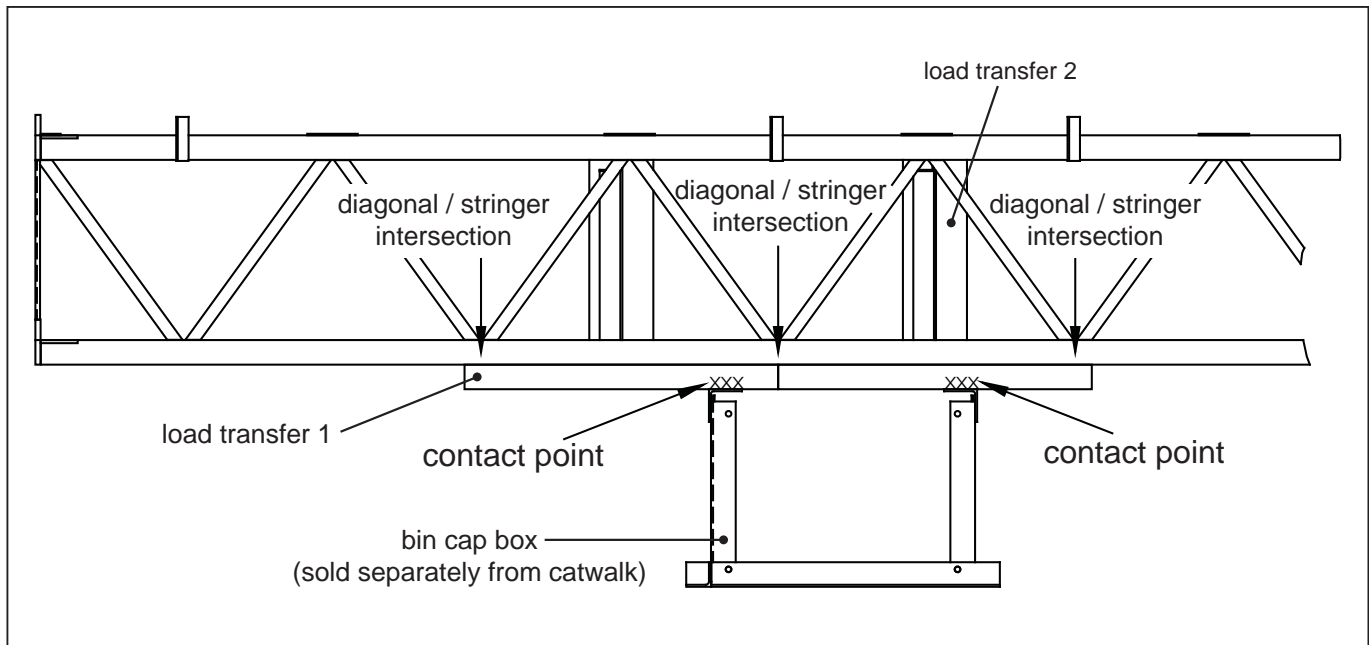
i IMPORTANT NOTE!

Load transfers are required at every support structure. The assemblies transfer catwalk/conveyor loadings into the support structures. It's proper application and installation is critical to effectiveness of the catwalk.

Case 1: Bin Cap Box / Sidewall Bracket

NOTE: For a bin cap box, (2) load transfer assemblies are required due to (2) contact points, located between different diagonal/chord intersections.

NOTE: For a sidewall bracket, (1) contact point requires (1) load transfer.



Case 2: RS2844 and (2x) Towers

! WARNING!

If alternate methods are used to transfer the catwalk loads into the tower, other than the support beam configuration shown, contact Brownie Systems. The number of load transfer assemblies may change, as well as the support beam size requirements!

NOTE: Recommendations are provided for support beams ① and ②, for RS2844 and (2x) towers in the table below. These recommendations are based upon the assumption that the RS64 catwalk is centered over the support structure.

NOTE: Support beam ① must be centered relative to support beams ②, for equal load distribution.

NOTE: Catwalk loads must be equally distributed into towers. Using the support beam configuration shown in the example below, results in (1) contact point, which requires only (1) load transfer.

diagonal / stringer intersection

diagonal / stringer intersection

load transfer

contact point

support beam ①

support beam ②

support beam ②

support beam ①

support beam ②

Support Beam Size

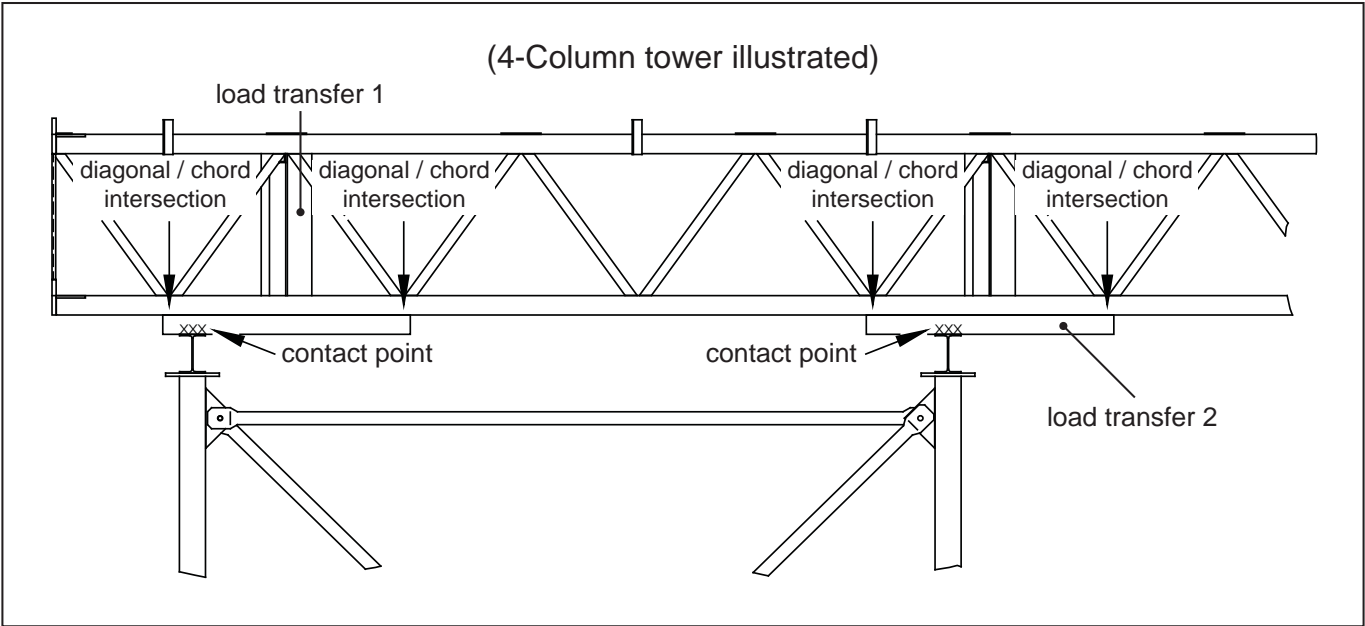
Tower Type	Support Beam 1	Support Beam 2
RS2844 Tower	W6 X 9	W6 X 9
(2x) Tower		
2' x 4' [610 mm x 1,219 mm]	W6 X 9	W6 X 9
2' x 6' [610 mm x 1,829 mm]	W6 X 9	W6 X 9
2' x 8' [610 mm x 2,439 mm]	W6 X 15	W6 X 9
2' x 10' [610 mm x 3,048 mm]	W12 X 14	W6 X 9
2' x 12' [610 mm x 3,658 mm]	W12 X 19	W6 X 9

Case 3: 2-Column and 4-Column Towers

⚠ WARNING!
 If alternate methods are used to transfer the catwalk loads into the tower, other than the support beam configuration shown, contact Brownie Systems. The number of load transfer assemblies may change, as well as the support beam size requirements!

NOTE: Catwalk loads must be equally distributed into towers. 4-Column towers require (2) load transfer assemblies (2 contact points), 2-Column towers require (1) load transfer (1 contact point).

NOTE: Support beam recommendations are provided for 2-Column and 4-Column towers in the table below. These recommendations are based on the assumption that the RS64 Catwalk is centered over the support structure.



Support Beam Size

2-Column tower

4-Column tower

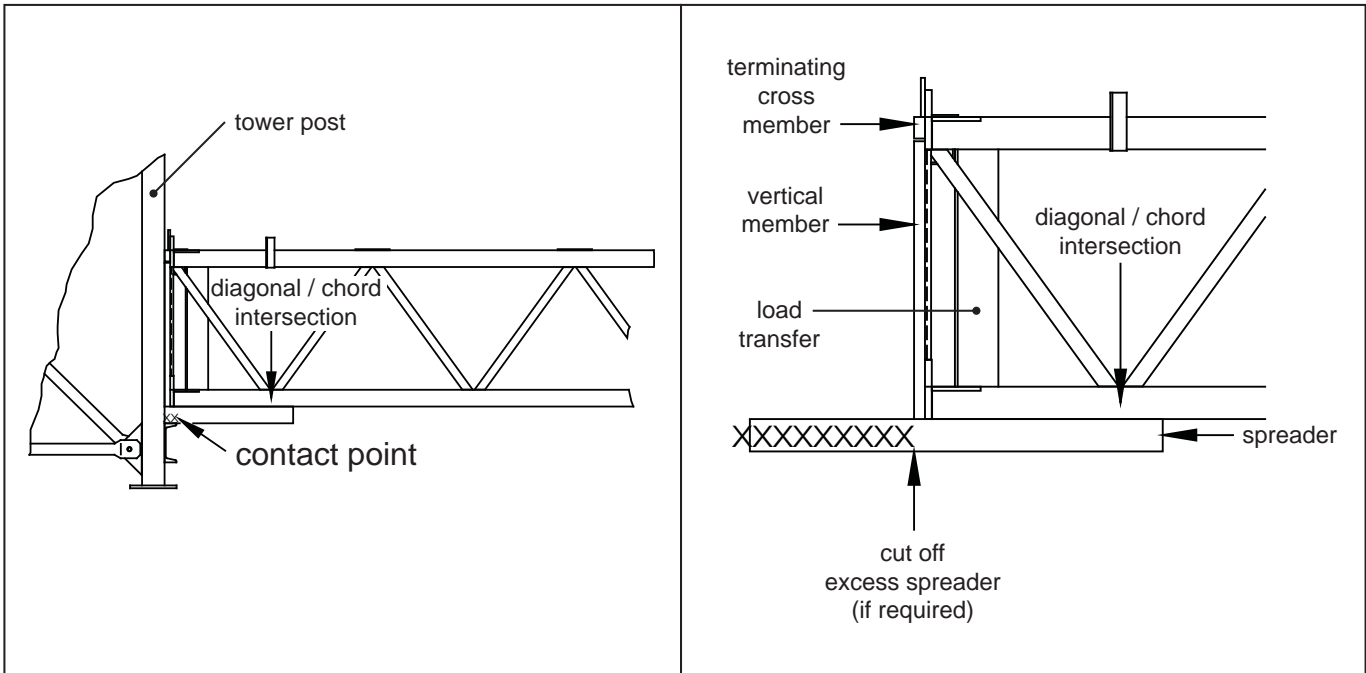
Tower	Support Beam
4' [1,219 mm] wide	W6 X 9
6' [1,829 mm] wide	W6 X 9
8' [2,439 mm] wide	W6 X 15
10' [3,048 mm] wide	W12 X 14
12' [3,658 mm] wide	W12 X 19

Tower	Support Beam
4' x 4' [1,219 mm x 1,219 mm]	W6 X 9
6' x 6' [1,829 mm x 1,829 mm]	W6 X 9
8' x 8' [2,439 mm x 2,439 mm]	W6 X 9
10' x 10' [3,048 mm x 3,048 mm]	W6 X 12
12' x 12' [3,658 mm x 3,658 mm]	W10 X 12

Case 4: Support at End of Catwalk Run (within 18" [457 mm])

NOTE: When a support/catwalk contact point is within 18" [457 mm] of the end of a catwalk run, the load transfer is required to extend to one diagonal/chord intersection only. Position the load transfer, so the vertical member is flush with the terminating cross member. For a catwalk terminating flush into a structure (see example below), cut off excess spreader.

NOTE: Channel support beam recommendations are provided, for a catwalk terminating flush into a structure. See table below. These recommendations are based on the assumption that the RS64 Catwalk is centered relative to the support structure.



Support Beam Size

Tower	Support Beam
4' [1,219 mm] wide	C4 x 5.4
6' [1,829 mm] wide	C4 X 5.4
8' [2,439 mm] wide	C7 x 9.8
10' [3,048 mm] wide	C9 x 13.4
12' [3,658 mm] wide	C9 x 13.4

End Enclosure

End enclosures terminate catwalk runs for applications where access is not required. For end enclosure installation, see the examples on [this page](#) and [the next page](#).

End Enclosure Parts

Part Number	Description	Quantity
4300015	end enclosure rail	2
4300016	end enclosure toe board	1

1 toe board, terminating x-member

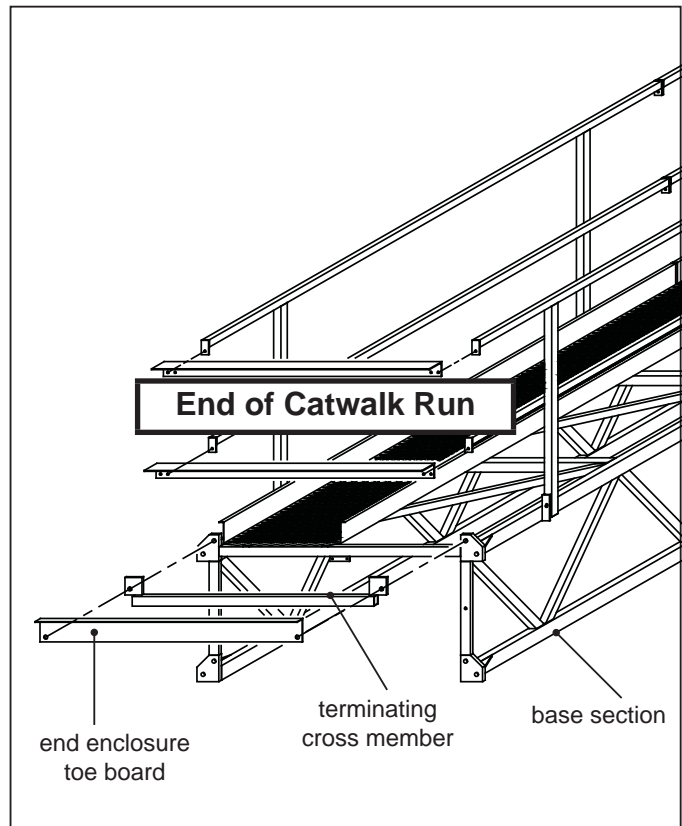
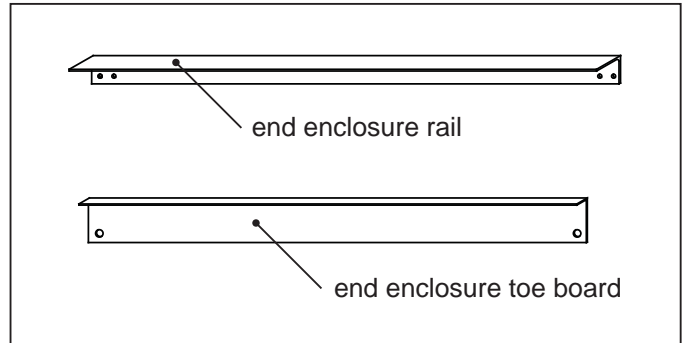
Install end the enclosure toe board and terminating cross member to the base section. Use (2) 3/4" x 3" (grade 5) hex bolts, lock washers, and nuts.

2 install end enclosure rails

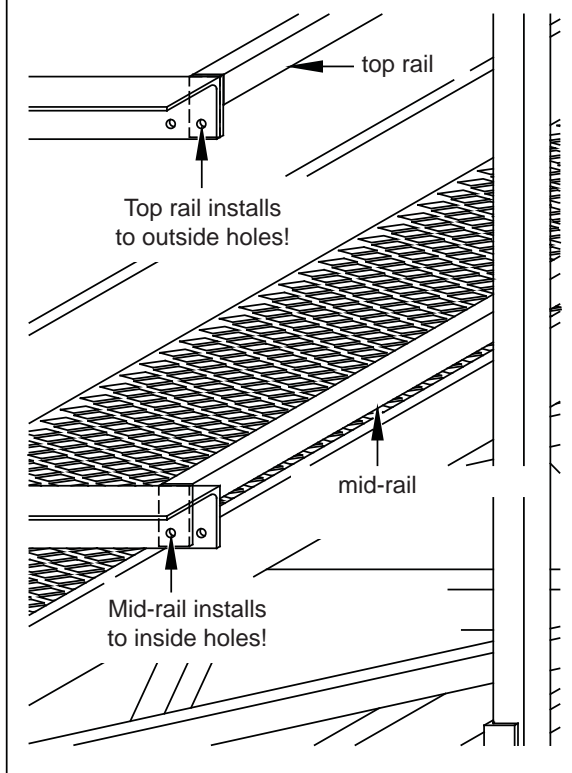
Install end enclosure rails to the handrail system top rails and mid-rails. Use (4) 7/16" x 1 1/4" hex bolts, lock washers, and nuts.

3 tighten all hardware

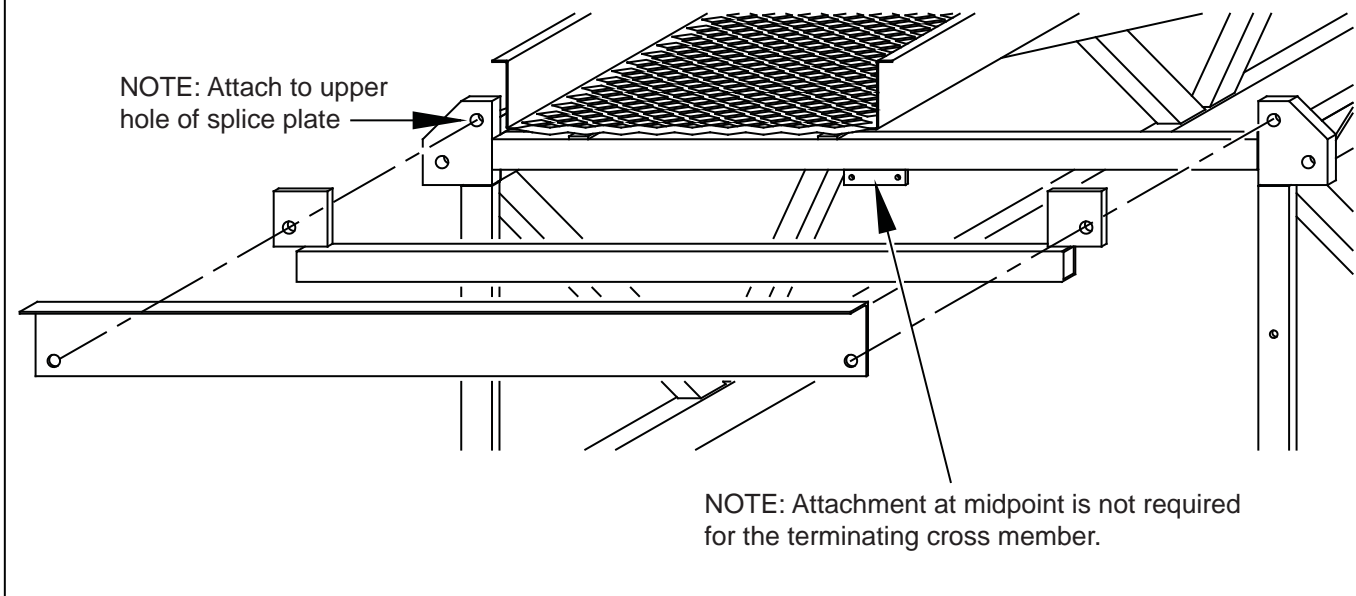
Torque all hardware connections according to the Bolt Torque Values table on [page 14](#).



End enclosure rail /
Handrail installation detail



End enclosure toe board /
terminating cross member /
base section installation detail



Index

Numbers

4 basic safety rules 12

A

accessories 6, 9
additional loading 9
ANSI 8
assembly 16
auxiliary equipment 9
auxiliary equipment safety 7

B

be alert 2
bin cap box 28
bolt head identification 14
bolt torque 14
building codes 9

C

case 1: bin cap box / sidewall bracket 28
case 2: RS2844 and (2x) towers 29
case 3: 2-column and 4-column towers 30
case 4: support at end of catwalk run 31
catwalk / conveyor load transfers 26
catwalk installation 21
catwalk section assembly 18
catwalk sections 16, 17
catwalk weight 13
cautions 7
climbing equipment 7
codes 9
construction 10
construction personnel 2, 3
conveyor mounting 24
conveyor support recommendations 24
conveyor support requirements 24
covers 12

crane rigging 21
cross member 19

E

electric codes 9
end enclosure 32
end enclosure rail 33
end enclosure toe board 33
end of catwalk run 32

G

general safety 6
general safety requirements 6
general safety statement 3
grates 12
guards 7, 12

H

handrails 20
hazard area 6
hazards 3
heights 10

I

interlock switches 12

J

join sections 22

L

lighting 12
loads 21, 30
load transfers 16, 17, 26, 27, 28, 29, 30, 31
load transfers installation, specific cases 28
lock-out 7, 12

N

NIOSH 8

O

operating safety 12
operator 3
operator qualifications 8
OSHA 8, 9
OSHA occupational safety and health act of 1970 8
other important operating concerns 12

P

parts 16
precautions 3
proper personnel 8

R

recommended tools 15
required pre-assembly 14

S

safety 2, 3, 6, 7, 8, 9, 10, 11, 12
safety cables 9
safety decals 7
safety questions or concerns 8
secondary safety devices 12
shields 7
specifications 13
support beam size 30, 31

T

terminating cross member 16, 17, 21, 23, 32

W

walkway 18, 19
welding 11, 27
wind loads 10, 11
wind / weather 7
work area and equipment safety 7
work area safety statement 6

Notes:

Recent Significant Manual Changes:

2011-10- Rev. 01 Changes

- 1** Pages 1 and 38. A new manual cover replaced the old manual cover.
- 2** Page 3. The English text note was added.
- 3** Page 4. The Table of Contents was regenerated.
- 4** Page 5. The Warranty was updated.
- 5** Page 8. OSHA, ANSI, and NIOSH contact information was added.
- 6** Pages 13 - 14. These pages changed places.
- 7** Page 14. New bolt torque values replaced old bolt torque values.
- 8** Pages 6, 7, 10, 20, 21, 22, 23, 26, 27, 31, 32, 34. Minor text changes were made.
- 9** Pages 34 - 35. The Index was regenerated.
- 10** Other minor changes were made throughout the manual.

www.globalindinc.com • www.go-brownie.com

MANUFACTURED BY

BROWNIE SYSTEMS
A Unit of **GLOBAL** Industries, Inc.



Brownie **SYSTEMS**

P. O. Box 2105 • 2928 East Highway 30
Grand Island, Nebraska 68802 - 2105, USA
TEL: 800-228-4285
FAX: 308-382-6954

© 2011 Global Industries, Inc. All rights reserved.